

# Solar Power Supply Solutions

Specified to your requirements



AV-PS-XX-XX-XX-CM  
power supply

## Features

Power supplies available in multiple configurations & sizes to suit various applications

Solar panel tilt angle can be set to suit geographical location

User-replaceable battery in 7-stage powder coated aluminium housing

Custom designs available

Easy to install and service

24V variants available on request

**Avlite offers a range solar power supplies to suit stand-alone navigation aid installations, such as obstruction and aviation lighting systems.**

The solar power supplies are available in multiple configurations, including various battery and solar sizing, and self-contained or modular options.

In addition, Sealite can provide customised designs for unique installation requirements.

## Solar Power Supplies

### Electrical Characteristics & Specifications\* \*

| Model             | AV-PS-12-10-7.5 | AV-PS-12-20-26 | AV-PS-12-40-26 | AV-PS-12-40-55 |
|-------------------|-----------------|----------------|----------------|----------------|
| Solar Panel (W)   | 10W             | 20W            | 40W            | 40W            |
| Battery Size (Ah) | 7.5Ah           | 26Ah           | 26Ah           | 55Ah           |

| Model             | AV-PS-12-60-55 | AV-PS-12-90-110 | AV-PS-12-140-110 | AV-PS-12-180-110 |
|-------------------|----------------|-----------------|------------------|------------------|
| Solar Panel (W)   | 60W            | 90W             | 140W             | 180W (2x 90W)    |
| Battery Size (Ah) | 55Ah           | 110Ah           | 110Ah            | 110Ah            |

| Model             | AV-PS-12-270-110 | AV-PS-12-90-220 | AV-PS-12-140-220 | AV-PS-12-180-220 |
|-------------------|------------------|-----------------|------------------|------------------|
| Solar Panel (W)   | 270W (3x 90W)    | 90W             | 140W             | 180W (2x 90W)    |
| Battery Size (Ah) | 110Ah            | 220Ah           | 220Ah            | 220Ah            |

| Model             | AV-PS-12-180-440 | AV-PS-12-270-220 | AV-PS-12-280-330 | AV-PS-12-560-330 |
|-------------------|------------------|------------------|------------------|------------------|
| Solar Panel (W)   | 180W (2x 90W)    | 270W (3x 90W)    | 280W (2x 140W)   | 560W (4x 140W)   |
| Battery Size (Ah) | 440Ah            | 220Ah            | 330Ah            | 330Ah            |

\* Specifications subject to change or variation without notice  
 \* Subject to standard terms and conditions



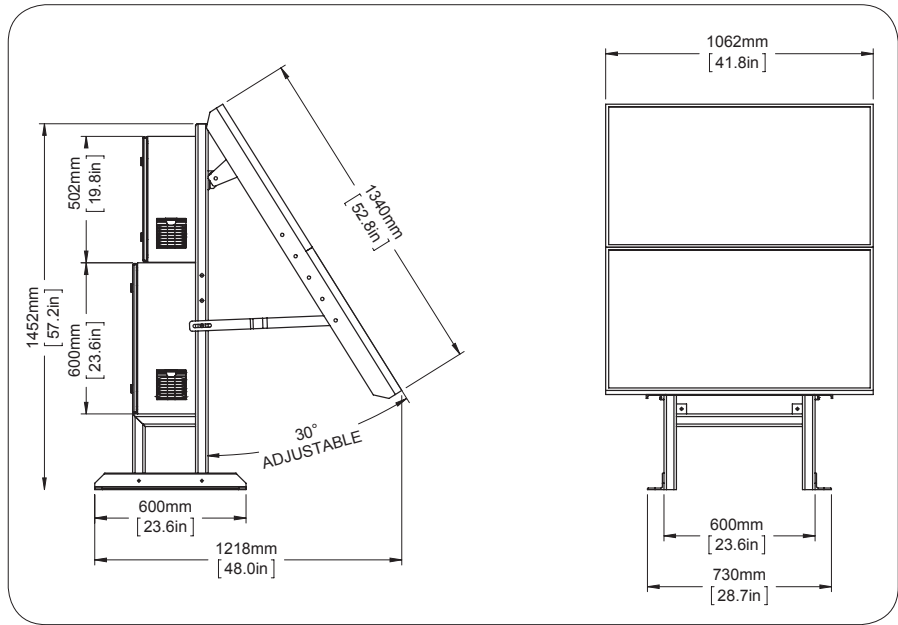
AUSTRALIA  
t: +61 (0)3 5977 6128

USA  
t: +1 (603) 737 1310

w: [www.avlite.com](http://www.avlite.com)  
e: [info@avlite.com](mailto:info@avlite.com)

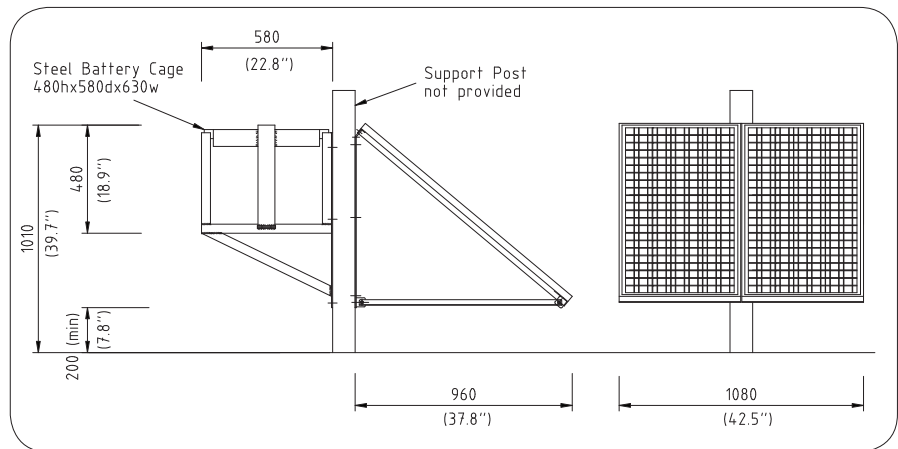
**AV-PS-XX-XX-XX-CM**  
power supply, includes;

- 24VDC configuration (standard)
- Up to 140Ah 24VDC
- 2x55, 85, 2x85 W Solar Panel(s)
- Weatherproof battery & electronics housing
- Solar charge controller, standard & advanced
- All in one mounting assembly w/ adjustable solar panel tilt angle
- Concrete foundation (LxWxD):  
1200 x 1200 x 200 mm  
48 x 48 x 8 inches



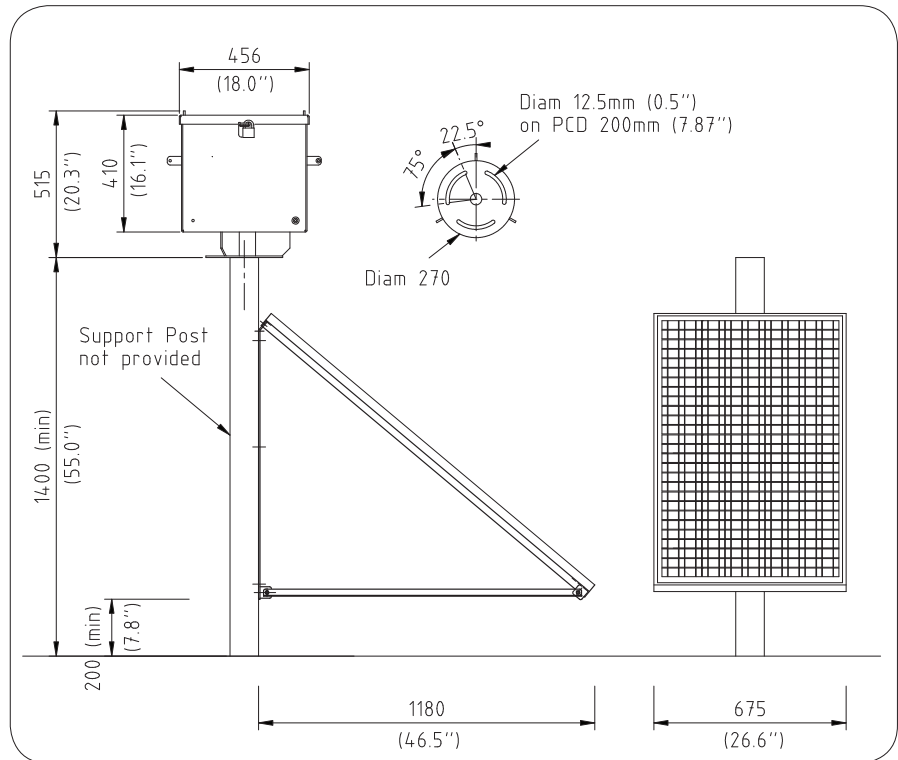
**AV-PS-12-180-220**  
180 watt power supply, includes;

- 2 x 90 watt solar panel c/w wall mounting bracket
- 2 x 110Ah batteries
- Solar charge controller
- Weatherproof battery housing
- Lockable powder coated battery cage (wall mounting)
- 3mtr cable to solar module & fixtures
- Concrete foundation (LxWxD):  
400 x 400 x 300 mm  
16 x 16 x 12 inches



**AV-PS-12-140-110**  
140 watt power supply, includes;

- 1 x 140 watt solar panel c/w wall mounting bracket
- 1 x 110Ah battery
- Solar charge controller
- Weatherproof battery housing
- Lockable powder coated battery box c/w 200mm bolt pattern mount - Type 2 series
- 3mtr cabling to solar module & fixtures
- Concrete foundation (LxWxD):  
400 x 400 x 300 mm  
16 x 16 x 12 inches



Note for concrete foundations:  
Unless otherwise noted, all cement shall be 'GP' General Purpose or 'GB' General Blended cement.  
Concrete characteristics - compressive strength at 28 days shall be 32 MPa.



\* Specifications subject to change or variation without notice  
\* Subject to standard terms and conditions



# Solar Power Supply Solutions

Specified to your requirements



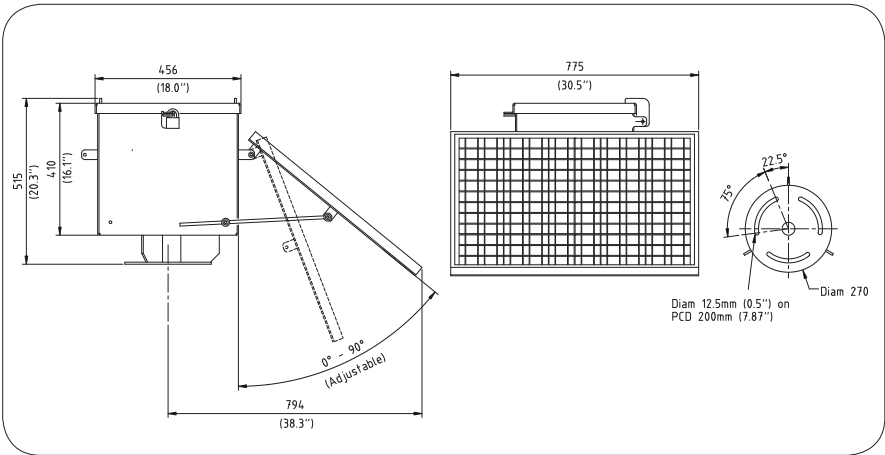
AV-PS-12-20-26

AV-PS-12-40-55

### AV-PS-12-60-55

#### 60 watt power supply, includes;

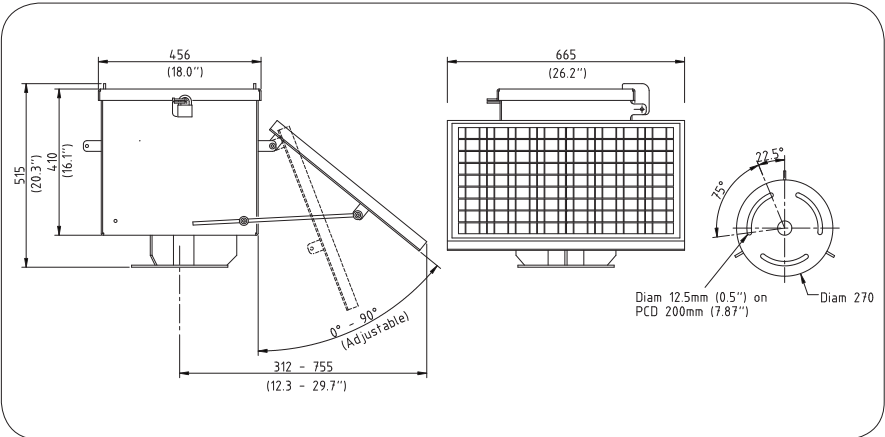
- 1 x 60 watt solar panel
- 1 x 55Ah battery
- Solar charge controller
- Weatherproof battery housing
- Lockable powder coated battery box c/w 200mm bolt pattern mount - Type 2 series
- Concrete foundation (LxWxD): 500 x 500 x 150 mm  
20 x 20 x 6 inches  
Riser required



### AV-PS-12-40-55

#### 40 watt power supply, includes;

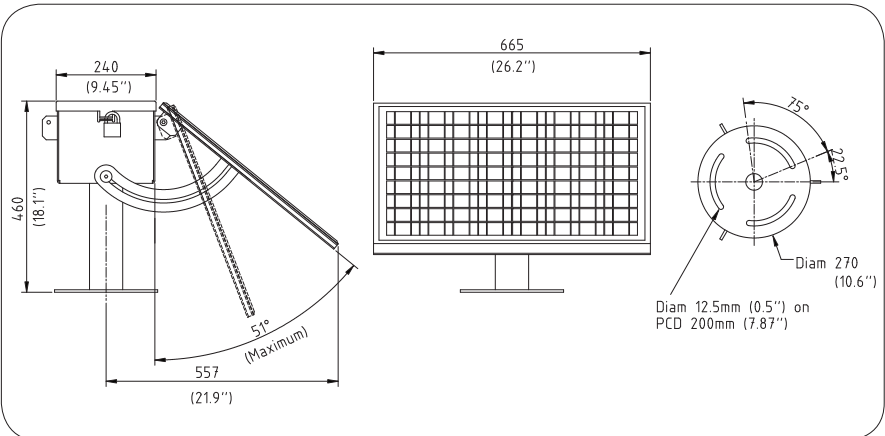
- 1 x 40 watt solar panel
- 1 x 55Ah battery
- Solar charge controller
- Weatherproof battery housing
- Lockable powder coated battery box c/w 200mm bolt pattern mount - Type 2 series
- 16mm cable gland access
- Concrete foundation (LxWxD): 500 x 500 x 150 mm  
20 x 20 x 6 inches  
Riser required



### AV-PS-12-40-26

#### 40 watt power supply, includes;

- 1 x 40 watt solar panel
- 1 x 26Ah battery
- Solar charge controller
- Weatherproof battery housing
- 16mm cable gland cable access
- Concrete foundation (LxWxD): 500 x 500 x 150 mm  
20 x 20 x 6 inches  
Riser required



Note for concrete foundations:

Unless otherwise noted, all cement shall be 'GP' General Purpose or 'GB' General Blended cement.  
Concrete characteristics - compressive strength at 28 days shall be 32 MPa.

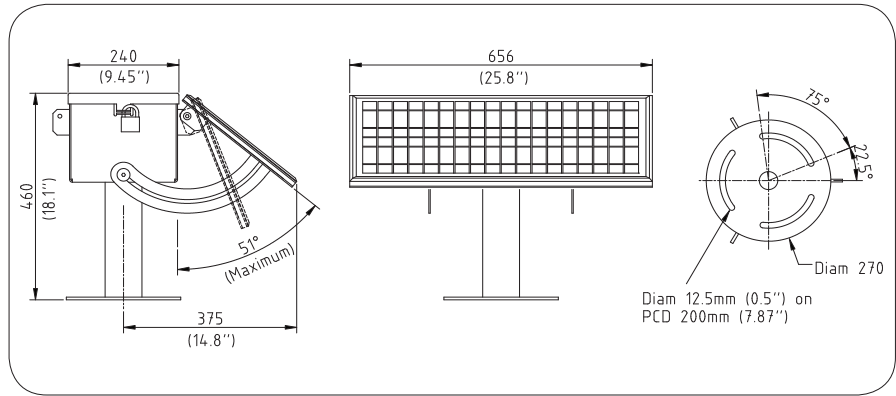
• Specifications subject to change or variation without notice  
\* Subject to standard terms and conditions



### AV-PS-12-20-26

#### 20 watt power supply, includes;

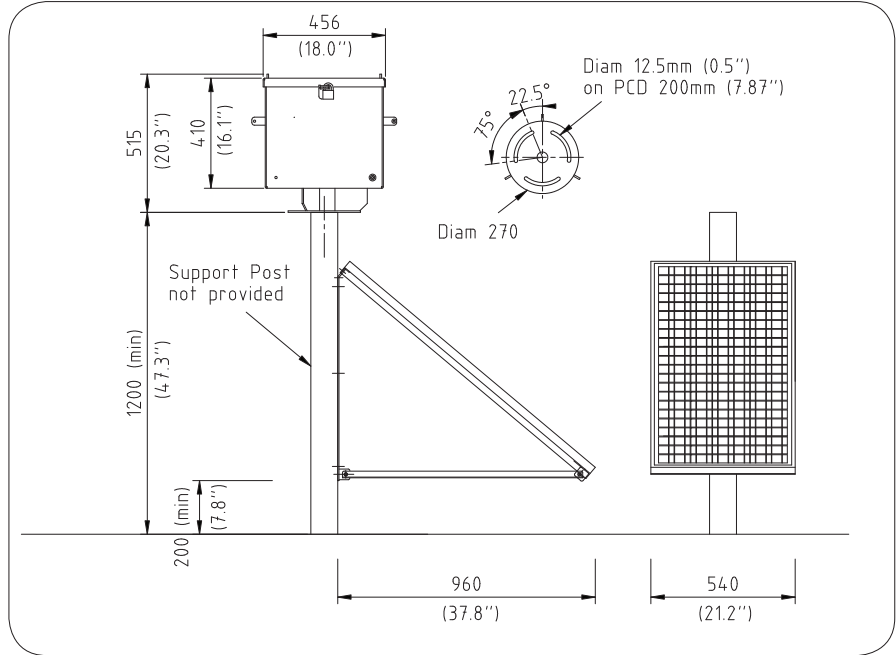
- 1 x 20 watt solar panel
- 1 x 26Ah battery
- Solar charge controller
- Weatherproof battery housing
- 16mm cable gland cable access
- Concrete foundation (LxWxD): 500 x 500 x 150 mm 20 x 20 x 6 inches



### AV-PS-12-90-110

#### 90 watt power supply, includes;

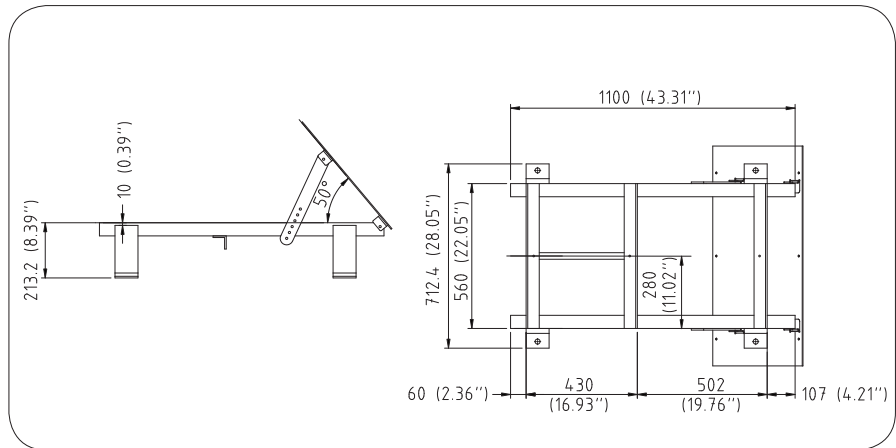
- 1 x 90 watt solar panel c/w wall mounting bracket
- 1 x 110Ah batteries
- Solar charge controller
- Weatherproof battery housing
- Lockable powder coated battery box c/w 200mm bolt pattern mount - Type 2 series
- 3mtr cabling to solar module & fixtures
- Concrete foundation (LxWxD): 400 x 400 x 300 mm 16 x 16 x 12 inches



### AV-PS-XX-XX-XX-GM

#### power supply, includes;

- 12 or 24VDC configuration
- 55Ah 85Ah or 100Ah batteries, up to two each
- 90, 100 or 120W Solar Panel
- Weatherproof battery housing
- Solar charge controller
- All in one mounting assembly w/ adjustable solar panel tilt angle
- Concrete foundation (LxWxD): 1200 x 1000 x 150 mm 48 x 40 x 6 inches



Note for concrete foundations:

Unless otherwise noted, all cement shall be 'GP' General Purpose or 'GB' General Blended cement. Concrete characteristics - compressive strength at 28 days shall be 32 MPa.



\* Specifications subject to change or variation without notice  
\* Subject to standard terms and conditions

